

G20 . G25

VALVE & INJECTOR CLEANER

Part no.	Product Descriptions	Version	Release Date	Page
G20 . G25	VALVE & INJECTOR CLEANER VENTIL & INJEKTOR REINIGER	V.2.G20	12.02.2008	1 / 1

Packaging	Transport & Storage Regulation	Language
METAL CANISTER WITH SAFETY CAP G20 : 250 ML G25 : 150 ML	CARGO CLASS 3 . UN 1993 FLAMMABLE LIQUID AVOID TRANSPORT BY AIR	ENGLISH

New improved Racing Formulation with Mn-P (Manganese Particle Additive)
VOLTRONIC® G20 and G25 are not ordinary VALVE & INJECTOR CLEANER. New improved formulation with Mn-P specially design for race engine with Turbocharged or NA (Naturally-Aspirated) engine.

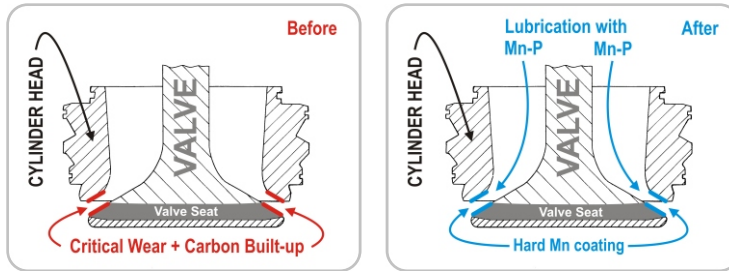


Figure 1

Valve and cylinder head subject to expose to extremely high temperature expulsion from combustion chamber. As shown on Figure 1, carbon built up and wear valve seat may caused:

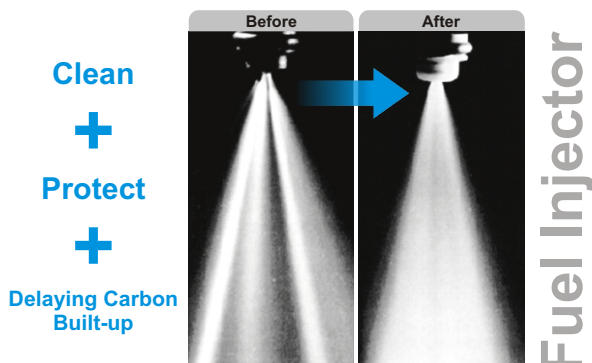
- Poor valve closure proximity and loss engine compression.
- Poor engine performance, lack engine power.
- Turbo-lack (delay turbo).
- Bad fuel economy and bad emission.
- Lead to costly cylinder head and engine damage.

Mn-P for Valve seat and Cylinder head PROTECTION
Nano particles Mn-P act as damper from the impact between valve seat and cylinder head for protection against premature wear. Formed Manganese hard coating to slowing carbon built-up (Figure 1) by crushing neglected excess carbon which try to stick on valve seat. Provide cleaner valve seat.

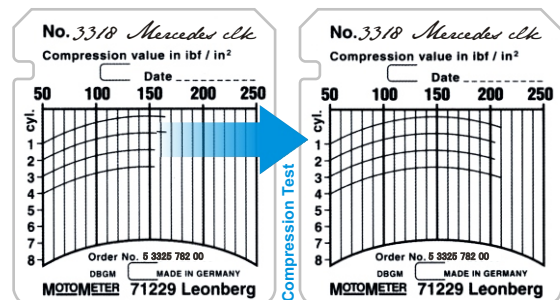
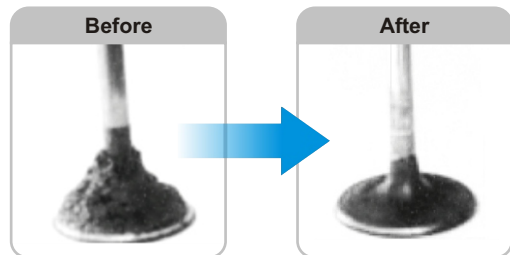
Complete Fuel System Cleaner

VOLTRONIC® G20 and G25 also has important capability as Complete system fuel cleaner, CLEAN + PROTECT + DELAY CARBON BUILT-UP from fuel tank up to combustion room.

- **Fuel Tank and Entire Fuel System Protection**
Gasoline fuel subject to contains a little percentage of water and Sulfur (S) cause poor engine performance and fuel tank corrosion. VOLTRONIC® G20 and G25 has capability :
* Dissolve water impurity for optimum combustion quality.
* Neutralize Sulfur, corrosion protection for entire system.
* Soften & remove muddy deposit in the entire fuel system.
- **Clean + Protect + Delaying Carbon Built-up**
Clean and protect fuel injector from carbon smear. Provide even spray pattern for optimum combustion process.



- **Removed carbon built-up on the valve and valve seat**
Provide optimum engine performance, improved fuel economy and reduce emission. Long lasting effect by delaying carbon built-up & restored engine compression.



Add directly into fuel tank, dosage 250 ml sufficient for treatment up to 60 Liters gasoline. Treat every 10,000 km.

SAFETY CAUTION

Flammable - Extremely no smoking - Irritating to eyes - Toxic to aquatic organisms, may cause long-term adverse effects in the aquatic environment - may cause lung damage if swallowed. Repeated exposure may cause skin dryness or cracking - vapors may cause drowsiness and dizziness - KEEP OUT OF REACH OF CHILDREN - In case of contact with eyes - rinse immediately with plenty of water and seek medical advice - avoid release to the environment - Refer to special instructions / safety data sheets - If swallowed, do not induce vomiting: seek medical advice immediately.

The regulatory information given above only indicates the principal regulations specifically applicable to the product described in the safety data sheet. The user's attention is drawn to the possible existence of additional provisions which complete these regulations. Refer to all applicable national, international and local regulations or provisions.

Please see particular product packaging attached. MSDS / SDS can be download at http://www.voltronic-germany.com/down_admaterials.asp